




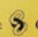




UNA PRODUZIONE ROBERT EVANS  
UN FILM DI ROMAN POLANSKI

**JACK NICHOLSON**      **FAYE DUNAWAY**  
**"CHINATOWN"**

Con JOHN HILLERMAN      JOHN HUSTON      Scenografie      Produttore Associato      Colonna sonora di  
PERRY LOPEZ - BURT YOUNG      e      RICHARD SYLBERT      C.O. ERICKSON      JERRY GOLDSMITH  
Soggetto      Prodotto da      Regia  
**ROBERT TOWNE**      **ROBERT EVANS**      **ROMAN POLANSKI**      TECHNOLOR® PANAVISION™

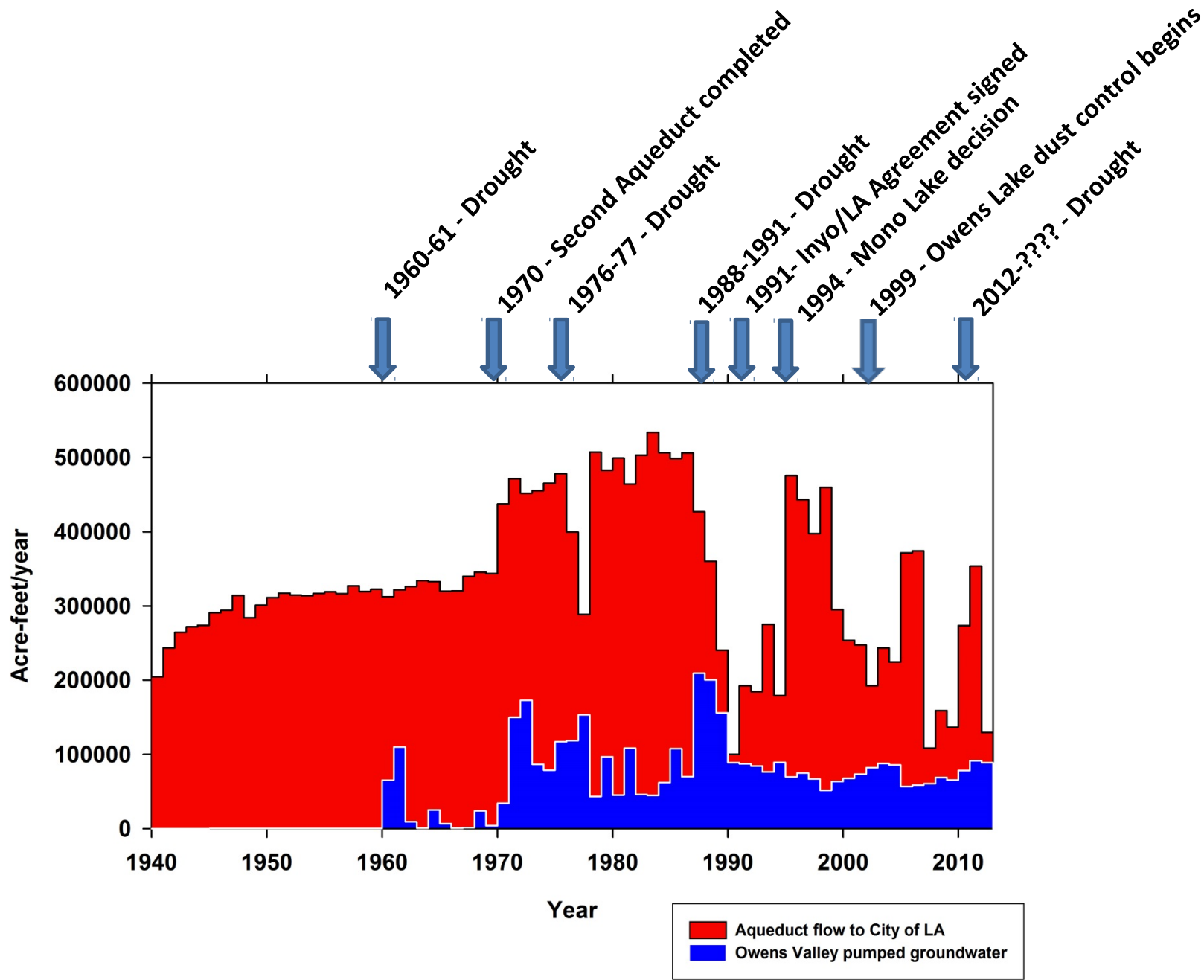
UNA PRESENTAZIONE  **PARAMOUNT**      DISTR.  **CINEMA INTERNATIONAL CORPORATION**

CONTRATTI PUBBLICITARI E DISTRIBUZIONE

ARMANDO TESTA

ARMANDO TESTA





# Inyo/LA Water Agreement (1991)

Settled CEQA litigation over operation of second aqueduct and litigation over County authority to regulate groundwater by a Superior Court Stipulation & Order

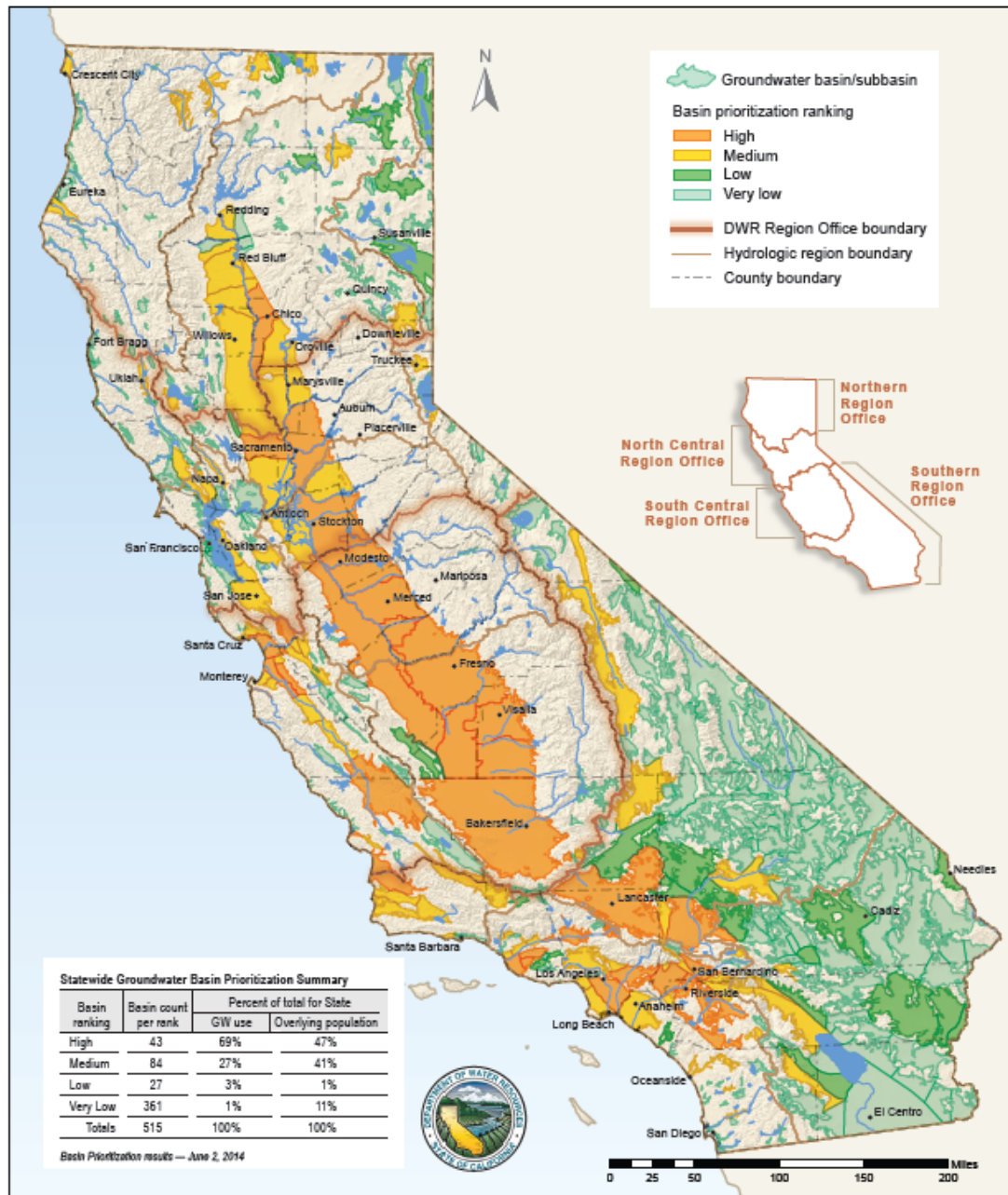
## **Overall goal:**

“The overall goal of managing the water resources within Inyo County is to avoid certain described decreases and changes in vegetation and to cause no significant effect on the environment which cannot be acceptably mitigated while providing a reliable supply of water for export to Los Angeles and for use in Inyo County.”

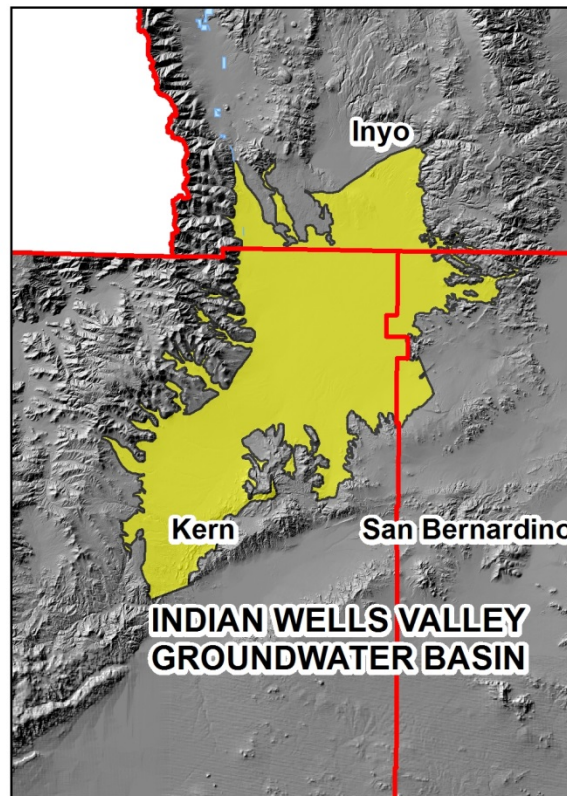
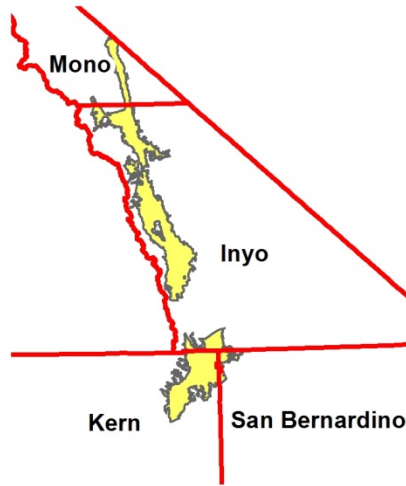
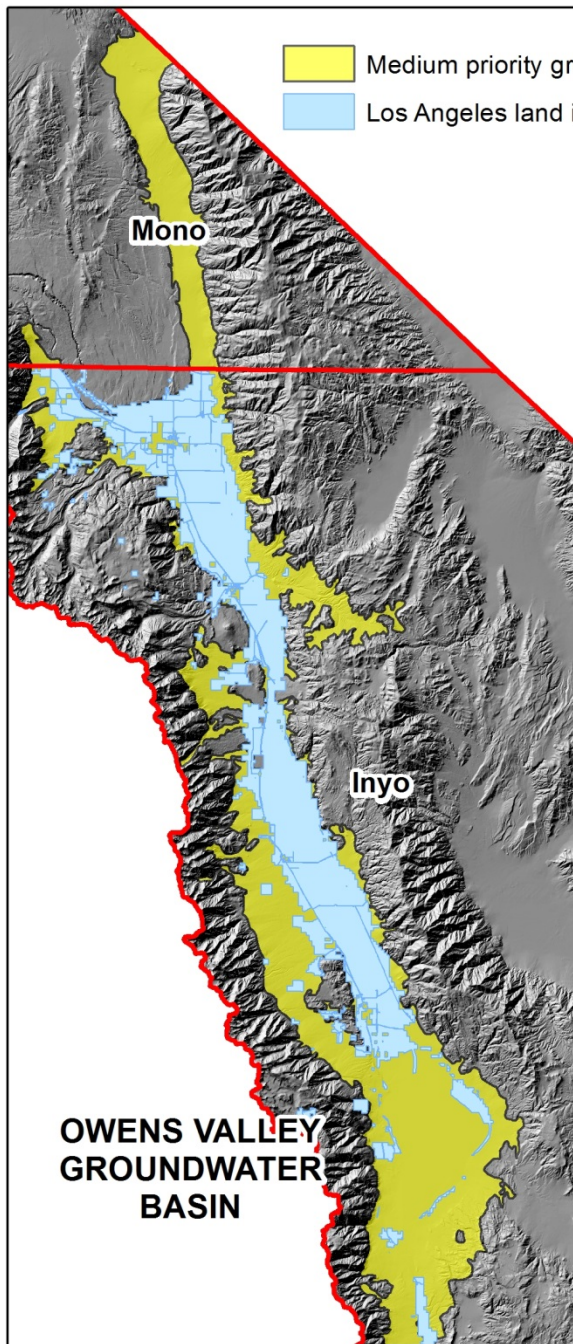
## **Strategies:**

- Establishes policy and technical oversight committees to implement agreement
- **Mitigates** negative effects of prior water management from 1970-1990
- Sets baseline vegetation conditions (1984-1987)
- **Manages** pumping to avoid future negative effects (1990 onward)
- **Monitors** conditions to assess compliance with agreement goals
- Sets out dispute resolution processes
- Provides financial resources for County
- Maintains irrigation on ~15,000 acres of historically irrigated lands

# CASGEM Groundwater Basin Prioritization







### Two medium priority basins in Inyo County:

- Owens Valley (shared by Inyo and Mono Counties)
- Indian Wells Valley (shared by Inyo, Kern, and San Bernardino)
- Other Inyo/Mono County basins are low or very-low priority

